

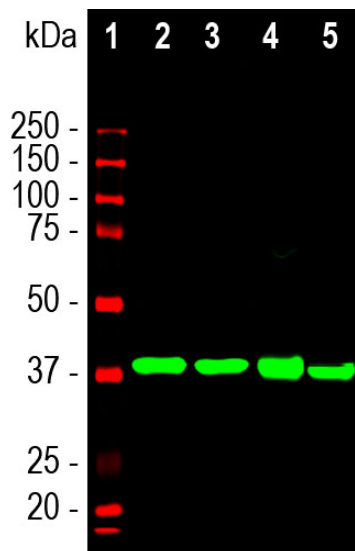
Ordering Information
 Web www.encorbio.com
 Email admin@encorbio.com
 Phone 352-372-7022
 Fax 352-372-7066

HGNC Name: ALDOC
UniProt: P09972
RRID: AB_2571880
Immunogen: N-terminal sequence
 MPHSYPALSAEQKKEKLSIDIA
Format: Purified antibody at 1mg/mL in 50% PBS,
 50% glycerol plus 5mM Na₂S₂O₃
Storage: Store at 4°C for short term, for longer term
 at -20°C. Avoid freeze / thaw cycles.
Recommended dilutions:
 WB: 1:2,000. IF/ICC or IHC: 1:1,000.

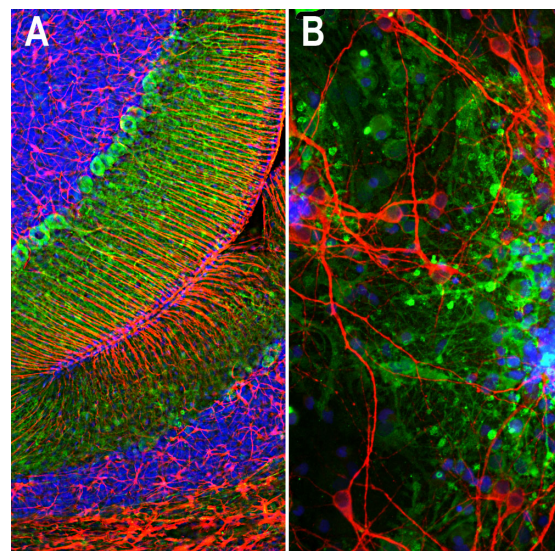
References:

1. Popovici T, et al. Localization of aldolase C mRNA in brain cells. *FEBS Lett.* 268:189-193 (1990).
2. Weber A, et al. Dietary Control of Aldolase B and L-type Pyruvate Kinase RNAs in Rat. *J. Biol. Chem.* 259:1798-802 (1984).
3. Mukai T, et al. The structure of the brain-specific rat aldolase C gene and its regional expression. *BBRC* 174:1035-42 (1991).
4. Royds J, et al. Monoclonal antibody to aldolase C: a selective marker for Purkinje cells in the human cerebellum. *Neuropathol. Appl. Neurobiol.* 13:11-21 (1987).
5. Thompson R., Kynoch P. Willson V. Cellular localization of aldolase C subunits in human brain. *Brain Res.* 232:489-93 (1982).
6. Schapira F, Reuber M, Hatzfeld A. Resurgence of two fetal-type of aldolases (A and C) in some fast-growing hepatomas. *BBRC* 40:321-27 (1970).
7. Halford J, et al. New astroglial injury-defined biomarkers for neurotrauma assessment. *J. Cereb. Blood Flow Metab.* 37:3278-99 (2017).

Applications	Host	Isotype	Molecular Wt.	Species Cross-Reactivity
WB, IIF/ICC, IHC	Mouse	IgG1 heavy, κ light	40kDa	Hu, Rt, Ms, Co, Pi



Western blot analysis of different tissue lysates using mouse mAb to aldolase C, MCA-4A9, dilution 1:2,000 in green: [1] protein standard (in red), [2] rat brain, [3] mouse brain, [4] cow cerebellum, and [5] pig hippocampus. The single strong band at about 40kDa corresponds to Aldolase C protein.



A. Immunofluorescence of rat cerebellum section stained with mouse mAb to aldolase C, MCA-4A9, dilution 1:1,000, in green, and costained with rabbit pAb to GFAP, *RPCA-GFAP*, dilution 1:5,000 in red. The blue is Hoechst staining of nuclear DNA. Aldolase C antibody selectively labels the perikarya and dendrites of Purkinje cells, while GFAP antibody stains processes of Bergman glia and astrocytic cells. B. Immunofluorescence of E20 rat cortical culture stained with MCA-4A9, dilution 1:1,000 in green, and costained with chicken pAb to MAP2, *CPCA-MAP2*, dilution 1:10,000 in red. The blue is Hoechst staining of nuclear DNA. Aldolase C antibody labels cytosolic protein expressed in glial cells, while MAP2 antibody stains dendrites and perikarya of mature neurons.

Background:

Aldolases are important glycolytic cytosolic enzymes which catalyse the reversible conversion of fructose-1,6-bisphosphate to glyceraldehyde 3-phosphate. There are three aldolase isozymes coded by three distinct genes in mammals, namely aldolases A, B, and C. Aldolase A is heavily expressed in muscle, and aldolase B is a liver-specific enzyme (1-5). In the adult, aldolase C is the brain-specific isozyme expressed in astrocytes and a few classes of neurons, notably Purkinje cells (4). Appropriate antibodies to aldolase C are therefore useful to identify astrocytes in cell culture and sections, and the enzyme may be over expressed in some forms of cancer (6). Recent studies also suggest that detection of aldolase C in blood may be a useful marker of the severity of traumatic brain injury (7).

The MCA-4A9 antibody was made against a recombinant construct including the N-terminal peptide of human aldolase C. Later mapping studies localized the epitope to the peptide HSPALSAEQKKEKLSIDIA, amino acids 3-20. Since the three aldolase enzymes are quite similar in amino acid sequence many available antibodies to one protein have usually undocumented cross-reactivity with the other two. However we have used appropriate recombinant constructs to shown that MCA-4A9 is completely specific for aldolase C with no reactivity with either aldolase A or B. Since we know the identity of the peptide used to generate MCA-4A9 is firmly mapped to the N-terminus of aldolase C, a region in which there is considerable variability between the three aldolase enzymes. This antibody works well on western blots and for IF, ICC and IHC.

FOR RESEARCH USE ONLY. NOT INTENDED FOR DIAGNOSTIC OR THERAPEUTIC USE.

Abbreviation Key:

mAb—Monoclonal Antibody pAb—Polyclonal Antibody WB—Western Blot IF—Immunofluorescence ICC—Immunocytochemistry
 IHC—Immunohistochemistry E—ELISA Hu—Human Mo—Monkey Do—Dog Rt—Rat Ms—Mouse Co—Cow Pi—Pig Ho—Horse Ch—Chicken
 Dr—D. rerio Dm—D. melanogaster Sm—S. mutans Ce—C. elegans Sc—S. cerevisiae Sa—S. aureus Ec—E. coli.