

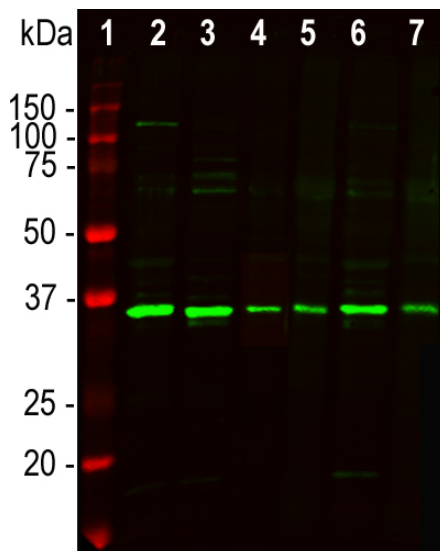
Ordering Information
 Web www.encorbio.com
 Email admin@encorbio.com
 Phone 352-372-7022
 Fax 352-372-7066

HGNC Name: FBL
UniProt: P22087
RRID: AB_2744517
Immunogen: Full length human fibrillarlin expressed in and purified from E.Coli
Format: Affinity purified antibody at 1 mg/mL in 50% PBS, 50% glycerol, plus 5mM NaH₂PO₄
Storage: Store at 4°C for short term, For longer term store at -20°C.
Recommended dilutions:
 Western blot: 1:2,000-1:5,000. ICC/IF: 1:2,000-1:5,000.

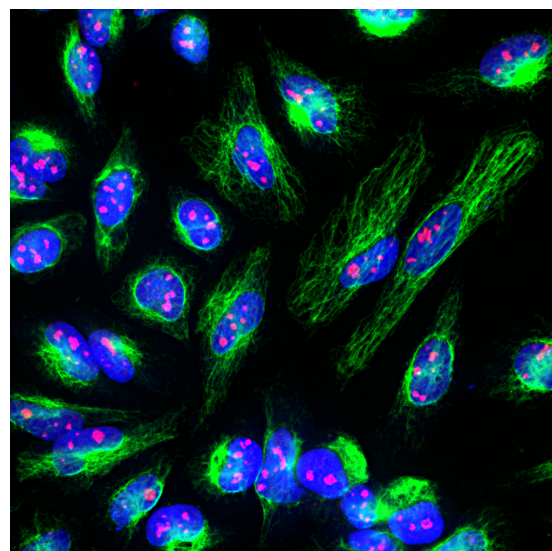
References:

1. Aris JP and Blobel G. Identification and characterization of a yeast nucleolar protein that is similar to a rat liver nucleolar protein. *J. Cell Biol.* 107:17-31 (1988).
2. Aris JP and Blobel G. cDNA cloning and sequencing of human fibrillarlin, a conserved nucleolar protein recognized by autoimmune antisera. *Proc. Natl. Acad. Sci.* 88:931-5 (1991).
3. Ochs RL, Lischwe MA, Spohn WH, Busch H. Fibrillarlin: a new protein of the nucleolus identified by autoimmune sera. *Biol. Cell.* 54:123-33 (1985).
4. Newton K, Petfalski E, Tollervey D, Caceres JF. Fibrillarlin is essential for early development and required for accumulation of an intron-encoded small nucleolar RNA in the mouse. *Mol. Cell Biol.* 23:8519-27 (2003).
5. Okano Y, Steen VD, Medsger TA. Autoantibody to U3 nucleolar ribonucleoprotein (fibrillarlin) in patients with systemic sclerosis. *Arth. Rheum.* 35:95-100 (1992).

Applications	Host	Isotype	Molecular Wt.	Species Cross-Reactivity
Western blot, ICC/IF, IHC, IP	Rabbit		34.5kDa	Human, Rat, Mouse, Horse, Dog



Western blot analysis of cell lysates using rabbit pAb to fibrillarlin RPCA-Fib, dilution 1:5,000, in green: [1] protein standard (red), [2] NIH-3T3, [3] HEK293, [4] HeLa, [5] SH-SY5Y, [6] C6, and [7] COS1 cells. The strong band at ~35kDa corresponds to the fibrillarlin protein.



Immunofluorescent analysis of HeLa cells stained with rabbit pAb to fibrillarlin, RPCA-Fib, dilution 1:5,000 in red, and costained with chicken pAb to vimentin, CPCA-Vim, dilution 1:10,000 in green. The blue is Hoechst staining of nuclear DNA. The CPCA-Fib antibody detects protein expressed in nucleoli of cells, while the vimentin antibody produces strong staining of cytoplasmic intermediate filaments.

Background:

Fibrillarlin is a highly conserved component of a nucleolar small ribonucleoprotein complex in mammals, involved in the processing of ribosomal RNA during ribosomal biogenesis. The protein runs at ~35kDa on SDS-PAGE and is very rich in basic amino acids having a PI of 9.8. Fibrillarlin was originally identified in humans since autoantibodies staining nucleoli were seen in some patients with the autoimmune disease scleroderma (1). Subsequently the protein fibrillarlin was found to be the human homologue of Nop1p, a *Saccharomyces cerevisiae* nucleolar protein, the two proteins being 67% identical (2,3). We have generated an alignment of the sequences of fibrillarlin and homologues downloadable from [here](#). The fibrillarlin molecule consists of an N-terminal glycine and arginine rich region followed by a highly conserved globular domain. Embryonic knockout of the fibrillarlin gene in mice is lethal, suggesting fundamental importance of this protein (4). Autoantibodies to fibrillarlin are also seen in patients with the autoimmune disease systemic sclerosis (5).

The RPCA-Fib antibody was made against recombinant human fibrillarlin expressed in and purified from *E. coli* and is superior on western blots of mammalian samples to the widely used MCA-38F3 antibody, which was originally raised against yeast Nop1p and later found to recognize fibrillarlin, the mammalian homologue of the yeast protein. However MCA-38F3 has been documented to be usable as a marker of nucleoli in a wide variety of species which has not so far been documented with this reagent. RPCA-Fib works well as a marker of nucleoli on mammalian cells grown in culture and in sections including formalin fixed and paraffin embedded material, see under "Additional Info" tag for details. We have also produced a chicken polyclonal antibody to fibrillarlin CPCA-Fib and an alternate mouse monoclonal MCA-4A4, both made against recombinant human fibrillarlin.

FOR RESEARCH USE ONLY. NOT INTENDED FOR DIAGNOSTIC OR THERAPEUTIC USE.

Abbreviation Key:

mAb—Monoclonal Antibody pAb—Polyclonal Antibody WB—Western Blot IF—Immunofluorescence ICC—Immunocytochemistry
 IHC—Immunohistochemistry E—ELISA Hu—Human Mo—Monkey Do—Dog Rt—Rat Ms—Mouse Co—Cow Pi—Pig Ho—Horse Ch—Chicken
 Dr—D. rerio Dm—D. melanogaster Sm—S. mutans Ce—C. elegans Sc—S. cerevisiae Sa—S. aureus Ec—E. coli.