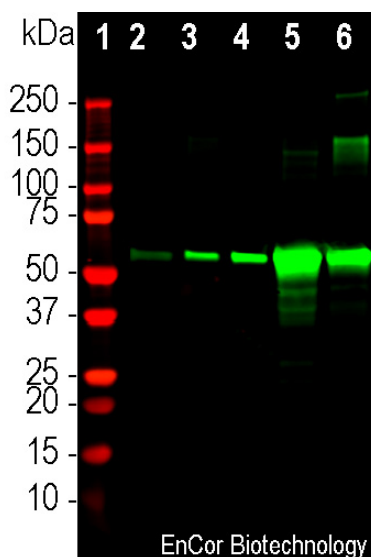


Ordering Information
 Web www.encorbio.com
 Email admin@encorbio.com
 Phone 352-372-7022
 Fax 352-372-7066

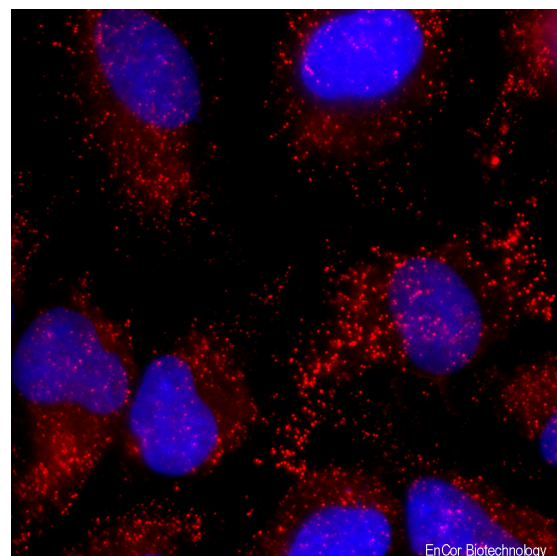
HGNC Name: CAT
UniProt: P04040
RRID: AB_3083048
Immunogen: Full length human catalase expressed in and purified from *E. coli*.
Format: Purified antibody at 1mg/mL in 50% PBS, 50% glycerol w/v plus 5mM Na₂S₂O₃
Storage: Shipped on ice. Store at 4°C for short term, for longer term at -20°C. Avoid freeze / thaw cycles.
Recommended dilutions:
 WB: 1:500, ICC/IF: 1:200, IHC: 1:1,000.

References:
 1. Kirkman HN. and Gaetani GF. Mammalian catalase: a venerable enzyme with new mysteries. *Trends Biochem Sci* 32:44-50 (2006).
 2. Goyal MM and Basak A. Human catalase: looking for complete identity. *Protein and Cell* 2:888-897 (2010).

Applications	Host	Isotype	Molecular Wt.	Species Cross-Reactivity
WB, ICC/IF, IHC	Mouse	IgG1 k	~60kDa	Hu, Rt, Ms



Western blot analysis of mouse different tissue lysates using mouse mAb to Catalase, MCA-6H14, dilution 1:500 in green: [1] protein standard (red), mouse tissue: [2] brain [3] lungs, [4] heart, [5] liver, and [6] kidney. Strong band at about 60kDa corresponds to catalase protein. The protein is particularly abundant in kidney and especially liver.



Immunofluorescent analysis of HeLa cell culture stained with mouse mAb to catalase, MCA-6H14, dilution 1:200 in red. The blue is Hoechst staining of nuclear DNA. MCA-6H14 antibody reveals visicular staining of catalase protein in peroxisomes in the cytoplasm.

Background:

Catalase is an enzyme found in all living organisms, including animals, plants, and microorganisms. In eukaryotes it is localized in peroxisomes, which are small, membrane-bound organelles responsible for various metabolic reactions in cells. Catalase catalyses the breakdown of hydrogen peroxide (H₂O₂) into water (H₂O) and oxygen (O₂). Hydrogen peroxide is a byproduct of various biochemical reactions in cells and can be harmful if allowed to accumulate, as it can modify and damage cellular proteins, lipids and nucleic acids (1,2). Catalase therefore prevents oxidative stress and maintains cellular health. Catalase forms a tetramer in vivo, and, like hemoglobin and the cytochromes, each subunit contains an iron containing heme group. The enzyme catalase is widely studied in biochemistry as liver is an unusually rich source of the native protein which allowed purification, amino acid sequence determination and crystallization in the 60s and 70s. Catalase activity is important for the regulation of cellular physiology and changes in aging and diseases associated with oxidative stress.

The MCA-6H14 antibody was made against full length recombinant human catalase expressed in and purified from *E. coli*. The antibody recognizes catalase in human, rodents and many other mammals and is a useful immunocytochemical marker of peroxisomes. It also works well for IHC on neutral buffered formalin fixed and paraffin embedded specimens, see under "additional Info" tab. We also supply a rabbit polyclonal antibody to catalase, [RPCA-Catalase](#).

FOR RESEARCH USE ONLY. NOT INTENDED FOR DIAGNOSTIC OR THERAPEUTIC USE.

Abbreviation Key:

mAb—Monoclonal Antibody **pAb**—Polyclonal Antibody **WB**—Western Blot **IF**—Immunofluorescence **ICC**—Immunocytochemistry
IHC—Immunohistochemistry **E**—ELISA **Hu**—Human **Mo**—Monkey **Do**—Dog **Rt**—Rat **Ms**—Mouse **Co**—Cow **Pi**—Pig **Ho**—Horse **Ch**—Chicken
Dr—*D. rerio* **Dm**—*D. melanogaster* **Sm**—*S. mutans* **Ce**—*C. elegans* **Sc**—*S. cerevisiae* **Sa**—*S. aureus* **Ec**—*E. coli*.